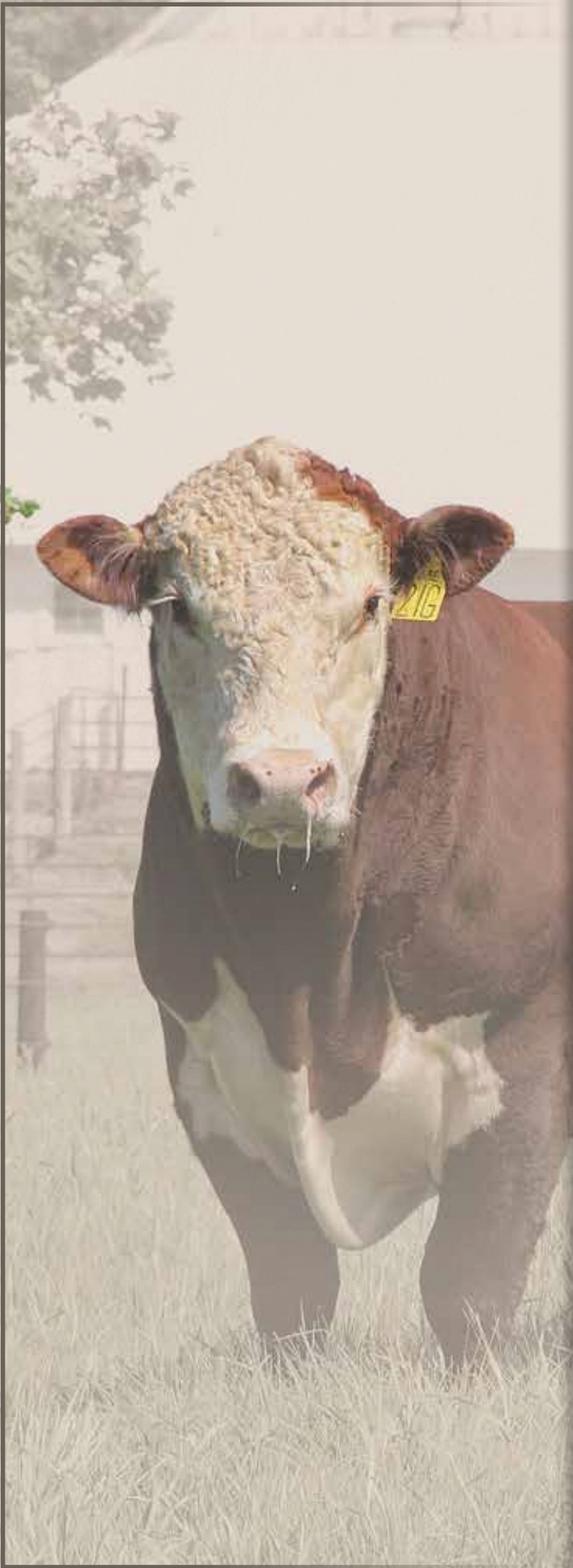




2024 WIESE & SONS HEREFORDS

PRIVATE TREATY OFFERING

MANNING, IOWA



Welcome Cattle Producers,

On behalf of the entire wiese family, we hope this catalog finds you well and thank you for showing interest in our hereford seedstock operation. Our program dates back to 1912, where five wiese generations have worked intensively to establish a reputable brand with honesty and integrity. We strive to develop quality, real-world hereford genetics while also emphasizing soil and land preservation through continuous conservation land management practices.

The american hereford association recognizes us as gold tpr breeders, which is achieved by collecting essential data points throughout an animal's development cycle. Not only do we go the extra mile to collect this data for your use, but we utilize it ourselves when making our breeding decisions each year to ensure we maximize the genetic potential of our cow herd.

While we typically specialize in bull production, we take great pride in raising every female that runs here on the ranch in a no-nonsense environment. We cull ruthlessly to ensure the bulls within this sale offering stem from cows that are docile, fertile, efficient, and hard-working. Doing so not only allows us to maintain a uniform cow herd but also better inform you of the replacement heifer potential of the bulls we offer year in and out.

To our repeat customers, we thank you for your continued support and belief in us as your hereford genetic supplier. To our potential new customers, we look forward to earning your trust and doing our part to set you up for success both today and in the future. We believe we're in the people business and strive to do our best both before and after the sale. If you have any questions on bulls, females, marketing, nutrition, or anything else, please do not hesitate to contact any of us. It's our absolute pleasure to help you find the right "good doin' bull" for each and every one of you!

Sincerely,
The Wiese Family



TERMS & CONDITIONS

PRIVATE TREATY FOR YOUR CONVENIENCE

- Bulls are offered on a first-come, first-served basis and are available for viewing here at the ranch with prior arrangements. You may select your bulls at any time and they will have passed a breeding soundness examination prior to pick-up or delivery. In the unlikely event that a bull selected does not pass its BSE, we'll do our best to find a bull of similar likeness to replace the one originally selected.
- The bulls you see offered throughout this catalog are available at the time of printing and we cannot guarantee their availability at the time of your inquiry.

SALE TERMS & LIABILITY

- All sales are cash and must be paid in full unless arrangements are made with the seller prior to pick-up or delivery. Bulls become the purchasers' property as soon as they are sold, but the seller must see that animals are properly cared for until needed. Any death or injury after the animal is sold is at the buyer's risk. All persons who visit the ranch do so at their own risk. Neither Wiese & Sons nor any person connected to this ranch assumes any liability, legal or otherwise, for accidents, illness, or loss of property that may occur.

WIESE GUARANTEE

- All bulls sold here at Wiese & Sons are guaranteed to be sound and healthy breeders at the start of their first breeding season. If an injury or problem is to occur within the first 90 days of breeding, the buyer will receive a credit minus salvage value towards a replacement bull of equal value. All injuries must be diagnosed by a licensed veterinarian and reported to Wiese & Sons as soon as the injury occurs.

HERD HEALTH

- All bulls are in excellent health and developed on a high roughage feed ration with full vaccination protocol at the recommendations of our veterinarians and nutritionists. Bulls will be semen tested and inspected by a licensed veterinarian prior to their departure from our operation.

WINTERING & DELIVERY

- Following the conclusion of the sale, Wiese & Sons offer free wintering of bulls purchased until June 1st. Bulls that cannot be delivered or picked up by then will be kept at the cost of \$4/hd/day until then.

IN-HERD SEMEN USE

- Wiese & Sons reserves the right to in-herd semen use on all bulls sold within this offering. Collection of said bull will be conducted at the buyer's convenience and the seller's expense.

INSURANCE

- Customers are encouraged to purchase mortality insurance on their bulls following their purchase. While there are many options, we recommend the buyer purchase insurance through their desired insurance company to meet their needs.

EPDS

- EPDs listed within this catalog are current at the time of printing. All genomically tested bulls will have the GE EPD logo next to their information. For current EPDs, give us a call or visit the American Hereford Association website to search for the most up-to-date information.



SALE INFORMATION

Ranch Address

31554 Delta Ave.
Manning, IA 51455

Contact Information

David Wiese
(712) 210-6378

Chance Wiese
(712) 210-6893

Shayne Wiese
(712) 210-6895

Office
(712) 653-3678

wieseandsons@gmail.com
www.wieseandsons.com

Vet Services

AMVC Manning
(712) 653-9460
AMVC Audubon
(712) 563-4201

Nutritionist

Purina - Sean Robinson
(402) 640-0103

Social Media



@wieseandsons

Lodging

Cobblestone Inn & Suites
120 Heritage Dr.
Manning, IA 51455
(712) 655-4000

Online Catalog and Supplement Sheet
can be found at

www.wieseandsons.com

GOOD DOIN' Advantage

Why Wiese & Sons Bulls?

Our breeding program strives to raise rugged, athletic range bulls developed on a high roughage ration to promote better longevity. We ruthlessly cull our replacement heifers and cow herd to ensure that the mothers these bulls stem from are everything you'd want in your own replacement females. Lastly, we've collected honest and accurate data points for decades, so you can better expect the numbers behind the bulls to be what you are looking for.

Marketing Assistance

One of our philosophies here at Wiese & Sons is we don't want to be viewed as just your Hereford genetic supplier. We want to help you achieve a premium for your hard work. With advanced notice, we can contact our order buyers and fellow clients seeking Wiese & Sons Hereford-influenced genetics. Visit our website to submit information on the livestock you wish to market at <https://wieseandsons.com/marketing/>

Volume Discounts

We value our volume buyers and gladly offer discounts for those wishing to purchase multiple bulls for their upcoming breeding season. Call ahead or ask us at the time of your visit for more information.

Customer Satisfaction Guarantee

We proudly stand behind the bulls we market each and every year by offering an unconditional 90-day first-breeding season guarantee. We also ensure that those electing to purchase their bulls sight unseen are satisfied with our selection and meet their approval and expectations.



REFERENCE *Sires*



JD AH PROMINENT 21G ET



**BUFORD GRAND DUKE
A407 D635**



NJW LONG HAUL 36E ET



WS KING TEN 3187 E213



**CHURCHILL RED BARON
8300F ET**



WS BATTLE 120 F268

JD AH Prominent 21G ET Homozygous Polled JDH 11B Stud 3134 63E
44014204

Buford Grand Duke A407 D635 Homozygous Horned JAK L1 Domino A407
43728094 Buford Lady 800A

NJW Long Haul 36E ET Heterozygous Polled Churchill Sensation 028X
43829326 NJW 79Z 10W Rita 11B

WS King Ten 3187 E213 Heterozygous Polled WS King Ten 0190 3187
43810330 WS Miss Battle 120 4105

Churchill Red Baron 8300F ET Homozygous Polled R Leader 6964
43938746 Churchill Lady 500C ET

WS Battle 120 F268 Homozygous Horned WS Battle 120 4139
43920351 WS Queen Ten 2260 579

CE	BWT	WWT	YWT	SC	SCF	MM	CW	REA	MARB	\$BMI	\$CHB
-1.4	3.2	67	98	1.7	27.8	35	77	0.62	0.33	549	150

CE	BWT	WWT	YWT	SC	SCF	MM	CW	REA	MARB	\$BMI	\$CHB
0	3.7	61	97	0	12.3	35	73	0.38	-0.4	252	62

CE	BWT	WWT	YWT	SC	SCF	MM	CW	REA	MARB	\$BMI	\$CHB
10.5	-0.1	62	100	2.1	27.6	47	70	0.54	0.08	533	128

CE	BWT	WWT	YWT	SC	SCF	MM	CW	REA	MARB	\$BMI	\$CHB
-6.6	4.5	45	66	0.6	14.7	19	46	0.43	0.4	314	109

CE	BWT	WWT	YWT	SC	SCF	MM	CW	REA	MARB	\$BMI	\$CHB
4.3	1.6	70	112	1.7	26.6	33	89	0.5	0.05	529	139

CE	BWT	WWT	YWT	SC	SCF	MM	CW	REA	MARB	\$BMI	\$CHB
-12	7.3	56	93	0.8	16.2	18	70	0.3	0.01	331	98

REFERENCE *Sires*



WS KING TEN 3300 G46



WS KING TEN 113 G170



CHURCHILL IMPACT 0219H



WS GRAND DUKE D635 H152



WS LONG HAUL 36E J07



WS PROMINENT 21G J121

WS King Ten 3300 G46
44030226

Heterozygous
Polled

WS King Ten 0115 3300
WS Grand Marketta 644 0235

CE	BWT	WWT	YWT	SC	SCF	MM	CW	REA	MARB	\$BMI	\$CHB
0.6	3.3	56	93	1.8	16.5	22	73	0.18	0.43	359	138

WS King Ten 113 G170
44046792

Heterozygous
Polled

TCC WS King Ten 113 ET
WS Grand Marketta 644 1108

CE	BWT	WWT	YWT	SC	SCF	MM	CW	REA	MARB	\$BMI	\$CHB
2.7	2.2	48	89	0.6	13.1	22	83	0.75	0.19	325	142

Churchill Impact 0219H
44149813

Homozygous
Horned

Churchill JR Impact 823F ET
Churchill Lady 5130C ET

CE	BWT	WWT	YWT	SC	SCF	MM	CW	REA	MARB	\$BMI	\$CHB
-6	6.3	70	121	1.6	20	32	80	0.49	0.12	404	118

WS Grand Duke D635 H152
44157911

Heterozygous
Polled

Buford Grand Duke A407 D635
WS Queen Ten 113 4195

CE	BWT	WWT	YWT	SC	SCF	MM	CW	REA	MARB	\$BMI	\$CHB
0.6	3.6	56	96	0.3	14.1	30	81	0.53	-0.24	309	97

WS Long Haul 36E J07
44276593

Heterozygous
Polled

NJW Long Haul 36E ET
WS Miss Battle 120 G57

CE	BWT	WWT	YWT	SC	SCF	MM	CW	REA	MARB	\$BMI	\$CHB
0.2	1.6	62	102	1.5	22.6	36	64	0.37	0.13	433	108

WS Prominent 21G J121
44261587

Homozygous
Polled

JDH AH Prominent 21G ET
WS Miss Battle 120 E247

CE	BWT	WWT	YWT	SC	SCF	MM	CW	REA	MARB	\$BMI	\$CHB
-5.9	5.3	73	115	0.8	21	27	73	0.71	0.26	424	125



PRIVATE TREATY
Bulls

PRIVATE TREATY *Bulls*



1

NAME Registration #	Polled Status	DOB	Sire Dam (Dam's Age)	BWT	205	Pigment	CE CW	BWT REA	WWT MARB	YWT \$BMI	MM \$CHB
WS Long Haul 36E L02 44488100	Horned	2/14/23	NJW Long Haul 36E ET WS Queen Ten D16 J31 (2)	75	763	0/100	6.1 74	1.2 0.61	64 -0.02	95 490	42 110

An extremely stout Long Haul son raised by an outstanding King Ten first calver. This bull will catch your attention in the pen at any angle and one you'll be proud of roaming your pastures this upcoming breeding season. Stout, high-performing, and the rancher's kind of bull.

2

WS Long Haul 36E L07 44488104	Homozygous Horned	2/18/23	NJW Long Haul 36E ET WS Fortress E45 J159 (2)	73	697	80/100	5.2 79	1.1 0.44	58 -0.04	87 497	38 109
---	----------------------	---------	--	----	-----	--------	-----------	-------------	-------------	-----------	-----------

Flawless in motion, this dark cherry red Long Haul son carries himself well with great foot shape and a large set of testicles. He's not only an attractive bull phenotypically but has a heifer-friendly EPD profile. L07 would make a great candidate to cover first calf heifers.

3

WS Long Haul 36E L11 44488108	Horned	2/20/23	NJW Long Haul 36E ET WS Queen Ten 5247 J53 (2)	69	615	100/100	9.0 67	1.0 0.48	56 0.13	94 441	38 119
---	--------	---------	---	----	-----	---------	-----------	-------------	------------	-----------	-----------

An extremely sound Long Haul son who can get up and move. This bull should be able to cover a lot of ground this upcoming breeding season and offers a great lineage and EPD profile to cover first-calf heifers. This bull also has a ton of maternal backing spread throughout his pedigree.

4

WS Long Haul 36E L12 44488112	Polled	2/20/23	NJW Long Haul 36E ET WS Miss Battle 120 J29 ET (2)	77	558	60/0	-2.8 66	2.3 0.45	55 0.19	87 453	37 124
---	--------	---------	---	----	-----	------	------------	-------------	------------	-----------	-----------

Another Long Haul son with a highly maternal lineage that traces back to the 753 cow who is still leaving an impact on our herd today. This bull's mother, J29, offers all the ideal traits such as slick hided, flawless udder design, and feminine features.

5

WS Prominent 21G L13 44449607	Scurred	2/21/23	JDH AH Prominent 21G ET WS Miss Long Haul 36E J13 (2)	72	615	100/100	4.4 73	1.5 0.51	58 0.39	87 492	33 146
---	---------	---------	--	----	-----	---------	-----------	-------------	------------	-----------	-----------

Our very first 21G son in this year's offering. This dark red, big testicled bull was raised by a hard-working Long Haul first calf heifer. A heifer-safe bull whose progeny would make ideal F1 baldy steers or replacement heifers.

6

WS Long Haul 36E L14 44488548	Scurred	2/22/23	NJW Long Haul 36E ET WS Miss Battle F268 J167 (2)	68	605	100/100	2.4 72	2.2 0.55	58 0.08	98 427	38 126
---	---------	---------	--	----	-----	---------	-----------	-------------	------------	-----------	-----------

About as well pigmented and short marked as they come. L14 is a stellar heifer-safe bull with a dam that combines performance with an excellent udder. One of our very favorites.

8

2024 WIESE & SON PRIVATE TREATY OFFERING

PRIVATE TREATY *Bulls*



7

NAME Registration #	Polled Status	DOB	Sire Dam (Dam's Age)	BWT	205	Pigment	CE CW	BWT REA	WWT MARB	YWT \$BMI	MM \$CHB
WS Baron 8300 L17 44449613	Polled	2/22/23	Churchill Red Baron 8300F ET WS Queen Ten 5247 J90 (2)	70	540	100/0	6.5 67	1.7 0.38	52 0.17	91 440	27 126

A dark red, heavy-pigmented Red Baron son who offers a ton of heifer bull potential. A bull with a nice light 70 lb birthweight, L17, traces back to our donor dam 9186, who'll be turning 15 years old this spring and continues to raise quality calves at her age.

8

WS Long Haul 36E L19 44488552	Horned	2/24/23	NJW Long Haul 36E ET WS Queen Ten E97 J152 (2)	82	569	80/40	4.2 59	2.8 0.32	59 0.27	98 435	38 124
---	--------	---------	---	----	-----	-------	-----------	-------------	------------	-----------	-----------

A very versatile Long Haul son that blends an easy-doin phenotype with an extra shot of marbling. His dam, J152, is an excellent young King Ten daughter.

9

WS Prominent 21G L20 ET 44449624	Heterozygous Polled	2/24/23	JDH AH Prominent 21G ET KJ 274S Roxy 482Y ET (12)	ET	609	80/40	-2.0 71	3.6 0.54	64 0.07	98 514	40 122
--	------------------------	---------	--	----	-----	-------	------------	-------------	------------	-----------	-----------

The first son of a very successful 21G x 482Y embryo transfer flush. L20, along with his flush mates, offer very similar traits: big-boned, thick-topped, and heavy-muscled. If you're looking to inject some performance into your cattle, be sure to give these rugged bulls a hard look.

10

WS Prominent 21G L21 ET 44449628	Heterozygous Polled	2/23/23	JDH AH Prominent 21G ET KJ 274S Roxy 482Y ET (12)	ET	604	60/60	-2.0 71	3.6 0.54	64 0.07	98 514	40 122
--	------------------------	---------	--	----	-----	-------	------------	-------------	------------	-----------	-----------

Almost identical in his makeup to the L20 bull and would make a great pair to send off together. Their calves would be very uniform in their type and have the potential to top a sale at your regional sale barn.

11

WS Long Haul 36E L23 44488554	Horned	2/25/23	NJW Long Haul 36E ET WS Queen Ten 5247 J54 (2)	74	624	100/60	5.3 66	2.3 0.47	58 0.11	100 407	38 118
---	--------	---------	---	----	-----	--------	-----------	-------------	------------	------------	-----------

A full sibling to the L11 bull in this year's offering. L23 offers great maternal potential and is backed by three of the greatest Wiese cow families ever to grace our ranch: King Ten, Grand Mark, and Battle Intense. Safe to breed heifers.

12

WS Long Haul 36E L24 44488555	Scurred	2/25/23	NJW Long Haul 36E ET WS Queen Ten 511 J110 (2)	75	604	100/100	4.4 62	1.5 0.31	50 0.09	83 458	34 114
---	---------	---------	---	----	-----	---------	-----------	-------------	------------	-----------	-----------

The final Long Haul son in this year's offering may be the most well-rounded of them all. Masculine skulled, goggled-eyed, soggy, with plenty of muscle and bone. Raised by a highly functional and efficient double-bred King Ten first calf heifer

PRIVATE TREATY *Bulls*

13

NAME Registration #	Polled Status	DOB	Sire Dam (Dam's Age)	BWT	205	Pigment	CE	BWT	WWT	YWT	MM
							CW	REA	MARB	\$BMI	\$CHB
WS Prominent 21G L25 ET 44449636	Heterozygous Polled	2/28/23	JDH AH Prominent 21G ET KJ 274S Roxy 482Y ET (12)	ET	653	80/20	-2.5	4.3	62	92	42
							77	0.55	0.07	498	125

Not only the stoutest bull of the 21G x 482Y flush, but maybe the entire sale offering. Here's a bull who'll inject some additional stoutness into one's cow herd and increase carcass weight and growth traits.

14

WS Prominent 21G L26 ET 44450685	Heterozygous Polled	3/1/23	JDH AH Prominent 21G ET WS Grand Marketta 644 9186 (14)	ET	748	100/0	-5.0	6.3	69	109	28
							93	0.92	0.03	378	151

A full sibling to the bull, K27, who we elected to keep and roam our pastures as a herd bull. L26 offers some of the best lineages of our program within his pedigree. His steers should finish out very well and daughters should last a long time.

15

WS Grand Duke H152 L30 44450750	Horned	3/7/23	WS Grand Duke D635 H152 WS Queen Ten 3300 H179 (3)	85	631	100/100	-2.1	4.4	57	97	27
							67	0.33	0.10	333	102

A dark red, heavy-pigmented bull comprised of 7/8ths Wiese breeding. His mother has a beautifully constructed udder and slicks her hair exceptionally well during the summer months. She was also one of the higher-grading females for marbling scan data in her group.

16

WS King Ten G170 L33 44450758	Horned	3/8/23	WS King Ten 113 G170 WS Grand Marketta 533 F112 (5)	81	630	100/100	-0.5	3.5	51	94	21
							70	0.49	0.11	285	110

Has range bull written all over him. This dark-haired bull has a ton of length and growth. Not only should his steers finish out heavier, but he should also inject extra ribeye size in his offspring just like his sire G170.

17

WS Long Haul J07 L37 44450766	Polled	3/8/23	WS Long Haul 36E J07 WS Mandella 66589 H34 (3)	67	545	100/100	6.1	-0.4	57	90	30
							70	0.45	0.16	384	114

This goggled-eyed bull offers big-time heifer bull potential and stems from one of the most well-rounded females on the entire ranch. His mother, H34, aka "Peaches," is a fan favorite among visitors.

18

WS Prominent 21G L39 44451107	Polled	3/9/23	JDH AH Prominent 21G ET WS Queen Ten 8200 455 (9)	81	651	100/100	2.4	2.6	58	85	30
							70	0.41	0.32	465	133

This bull has herd bull written all over him. This extremely stout, long-made 21G son has plenty of bone and carries huge testicles. He is backed by a soon-to-be 10-year-old King Ten daughter with a lot of longevity built into the pedigree. Be sure to give this guy a good look, as we strongly considered retaining him as a herd bull for ourselves.



10

PRIVATE TREATY *Bulls*

19

WS King Ten E213 L41
44451109

Polled Status

DOB

Sire
Dam (Dam's Age)

BWT 205 Pigment

CE

BWT

WWT

YWT

MM

CW

REA

MARB

\$BMI

\$CHB

-7.6

5.9

54

78

22

67

0.39

0.44

347

136

An extremely sound bull with excellent depth of body. L41 is conservatively marked and offers great pigmentation. His mother, F01, is a beautiful cow and traces back to the very influential and maternal 753 cow here at Wiese & Sons.

20

WS Prominent 21G L46 ET
44451117

Homozygous
Polled

3/11/23

JDH AH Prominent 21G ET
WS Queen Ten 8200 E102 (6)

ET 661 0/40

-3.4

4.3

57

86

32

80

0.58

0.09

402

129

One of our favorite bulls in the entire offering. This stout-made, moderate-framed bull moves flawlessly in motion while also DNA testing homozygous polled. His mother, E102, very well may be the best cow at Wiese & Sons.

21

WS Grand Duke H152 L47
44451119

Heterozygous
Polled

3/11/23

WS Grand Duke D635 H152
WS Miss Sensation 028X G38 (4)

81 680 100/100

2.9

1.8

53

92

40

81

0.35

-0.07

399

109

Here's a unique herd bull prospect that won't take you very long to find in the pen. This easy-doin, heavy-pigmented bull should make an awesome set of baldies. This bull is the female-making kind.

22

WS Battle F268 L50
44451125

Polled

3/12/23

WS Battle 4139 F268
WS Grand Marketta 644 0202
(13)

69 504 100/100

0.3

1.5

37

60

21

59

0.29

0.03

388

97

Here's one of the few Battle Intense sired bulls in this year's offering. This dark red, goggled-eyed bull stems from the highly maternal 0202 cow. 0202 turns 14 next year and has left a solid impact here at Wiese & Sons. One of our very favorite dams.

23

WS Prominent 21G L51
44451128

Polled

3/12/23

JDH AH Prominent 21G ET
WS Grand Marketta 644 1108
(12)

85 661 0/80

-2.0

4.5

62

99

35

76

0.56

0.23

459

135

A full sibling to maybe the best bull in our 2023 bull offering. This 21G son traces back to our highly productive 1108 cow, who continues to do great things for our program today. If we didn't have so much of her influence spread throughout our herd, this bull would have stayed in our pastures.

24

WS Prominent 21G L52
44451131

Polled

3/13/23

JDH AH Prominent 21G ET
WS Queen Ten 3300 D259 (7)

97 676 100/100

-5.3

4.8

64

95

32

72

0.44

0.46

452

144

Another stout 21G son with a bit more growth than the rest of the pen. This bull comes with big-time performance and carcass traits. He offers one of the highest Ribeye and Marbling EPD combinations in this year's offering.

PRIVATE TREATY *Bulls*



25

NAME Registration #	Polled Status	DOB	Sire Dam (Dam's Age)	BWT	205	Pigment	CE CW	BWT REA	WWT MARB	YWT \$BMI	MM \$CHB
WS Long Haul J07 L53 44451136	Polled	3/13/23	WS Long Haul 36E J07 WS Victoria E187 H105 (3)	67	531	100/100	5.7 68	0.0 0.49	45 0.07	74 381	26 115

An attractive J07 son that's moderate framed and easy-doin. This dark red, goggled-eyed bull has great heifer bull potential and stems from a low-input female who works hard and pays the bills.

26

WS Prominent 21G L55 44451138	Homozygous Polled	3/14/23	JDH AH Prominent 21G ET WS Queen Ten 3300 E181 (6)	85	698	0/0	3.3 64	1.3 0.28	53 0.46	81 448	26 127
---	----------------------	---------	---	----	-----	-----	-----------	-------------	------------	-----------	-----------

A standout since birth, L55 is almost a replica of his sire, Prominent 21G. This dark red, homozygous polled bull offers tremendous stoutness and thickness and stems from potentially our next donor cow E181. His full sister is the best two-year-old on the ranch. We are excited about one!

27

WS Baron 8300 L57 44451144	Homozygous Polled	3/14/23	Churchill Red Baron 8300F ET WS Queen Ten 113 491 (9)	106	708	100/100	-7.8 79	7.2 0.53	72 -0.11	111 377	21 117
--------------------------------------	----------------------	---------	--	-----	-----	---------	------------	-------------	-------------	------------	-----------

One of the most attention-grabbing bulls in this year's offering. This dark red, homozygous polled Red Baron son has a masculine look and offers perfect pigmentation around his eyes. His mother, 491, is a powerful King Ten daughter that visitors easily identify as one of their favorites.

28

WS Battle F268 L59 44451151	Polled	3/14/23	WS Battle 4139 F268 WS Miss Foremost 563 F191 (5)	88	659	80/100	-8.6 69	6.3 0.42	59 0.17	97 354	25 112
---------------------------------------	--------	---------	--	----	-----	--------	------------	-------------	------------	-----------	-----------

Growth and performance is the best description of L59. Long-bodied and stout, this bull will sire calves that add some pounds at weaning and convert in the feedyard.

29

WS King Ten G46 L61 44451160	Polled	3/15/23	WS King Ten 3300 G46 WS Queen Ten 113 G151 (4)	80	646	20/40	-0.2 69	3.5 0.42	53 0.33	87 327	22 126
--	--------	---------	---	----	-----	-------	------------	-------------	------------	-----------	-----------

Stout made G46 son out of a moderate-framed, hard-working King Ten daughter with a solid EPD profile from left to right. His pedigree has as much Wiese breeding within it as any bull in the sale pen.

30

WS King Ten G170 L66 44474337	Horned	3/15/23	WS King Ten 113 G170 WS Miss Foremost 588 F108 (5)	92	674	100/100	-0.3 64	3.5 0.42	54 0.19	98 325	23 113
---	--------	---------	---	----	-----	---------	------------	-------------	------------	-----------	-----------

One of the highest growth bulls in the pen. This bull will add pounds to some steers. L66 will please anyone who's looking to increase weaning and yearling weights.

12

PRIVATE TREATY *Bulls*



31

WS King Ten G46 L67
44474338

Heterozygous
Polled

3/15/23

WS King Ten 3300 G46
WS Mandella 66589 H31 (3)

80 639 0/100

CE	BWT	WWT	YWT	MM
-1.7	2.4	63	103	27
79	0.43	0.40	424	142

A very attractive G46 son with excellent feet and legs and a great hip on him. Out of a slick-haired, tight-uddered Mandate daughter that traces back to our great 753 cow. This bull has the potential to make some great replacement heifers.

32

WS Long Haul J07 L69
44474341

Horned

3/15/23

WS Long Haul 36E J07
WS Grand Duchess D635 H162 (3)

80 681 0/0

CE	BWT	WWT	YWT	MM
1.6	2.3	59	97	33
75	0.52	0.08	363	112

A heavily muscled, big-boned J07 son out of one of our best-producing 3-year-olds. This bull has the look of a range bull and should make a heck of a set of F1 steers in his future.

33

WS Prominent J121 L72
44474344

Heterozygous
Polled

3/15/23

WS Prominent 21G J121
WS Queen Ten 8200 5188 (8)

87 673 100/100

CE	BWT	WWT	YWT	MM
-5.4	5.5	62	98	30
61	0.21	0.22	322	99

A well-marked, perfectly pigmented J121 son. This bull really looks sharp on the move and can fit in a lot of different breeding scenarios. Out of a slick-haired, nice-uddered King Ten daughter. One of our very favorites!

34

WS King Ten G170 L73
44474345

Polled

3/15/23

WS King Ten 113 G170
WS Fortress 1312 F15 (5)

85 649 0/0

CE	BWT	WWT	YWT	MM
0.7	3.0	53	89	24
73	0.56	-0.01	297	108

A stout-made G170 son with a lot of length and muscle. His mother, F15, has done a wonderful job for our program and has qualified as an American Hereford Association Dam of Distinction. About as well balanced and correct as we can make one.

35

WS Prominent J121 L76
44474352

Polled

3/16/23

WS Prominent 21G J121
WS Queen Ten 113 F145 (5)

83 614 40/0

CE	BWT	WWT	YWT	MM
-2.3	3.8	57	89	24
72	0.49	0.19	380	120

Another well-designed J121 son, this easy doin bull was raised by a solid King Ten daughter with a great udder. Balance best describes this bull in 3 of our biggest selection criteria: phenotype, EPD's, and pedigree.

36

WS Grand Duke D635 L77
44474353

Horned

3/16/23

Buford Grand Duke A407 D635
WS Queen Ten 285 5284 (8)

90 667 100/40

CE	BWT	WWT	YWT	MM
-2.7	4.5	58	93	31
72	0.37	-0.19	301	85

There is a reason why we've made this mating for the past 3 years; it's just flat-out worked. L77 is a straight-up beef bull with a rugged presence. This bull is the cattlemen's kind.

PRIVATE TREATY *Bulls*

NAME Registration #	Polled Status	DOB	Sire Dam (Dam's Age)	BWT	205	Pigment	CE	BWT	WWT	YWT	MM
							CW	REA	MARB	\$BMI	\$CHB

37

WS King Ten G46 L81
44474359

Horned

3/16/23

WS King Ten 3300 G46
WS Queen Ten 511 G148 (4)

73 543 0/60

5.8	1.0	45	76	22
65	0.32	0.31	335	127

A nice heifer-safe bull out of one of our favorite soon-to-be 5-year-old cows. His dam, G148, is just the ideal cow when it comes to look and design. This bull fits that description as well and should fit just about any operations goals.

38

WS Baron 8300 L89
44474378

Polled

3/17/23

Churchill Red Baron 8300F ET
WS Queen Ten 8200 465 (9)

80 583 100/100

2.2	1.3	49	78	28
62	0.28	0.11	434	115

A goggled-eyed Red Baron son. This fella has really begun to hit his stride and could be a sleeper standout of this year's offering. His mother, 465, looks incredible for a 10-year-old female whose daughters are the easy-keeping kind. One of the standouts of the pen.

39

WS Prominent J121 L94
44474402

Polled

3/17/23

WS Prominent 21G J121
WS Victoria 06A F67 (5)

93 599 60/40

-4.0	4.9	62	100	23
68	0.41	0.21	364	119

Another J121 son that's designed a lot like his father. This bull is shaped nicely, good footed, and has plenty of depth of body. He was raised by a very feminine 719T granddaughter who'll surely catch your eye when driving through the pastures in the summer.

40

WS Impact 0219 L96
44474404

Polled

3/17/23

Churchill Impact 0219H
WS Queen Ten 113 G105 (4)

87 698 100/100

-3.4	5.2	63	101	27
77	0.61	0.07	357	112

This red-necked Impact son carries himself so well for as much muscle as he has. The Impact progeny are the true definition of range bulls that'll get out and cover cows in the summer months. L96 has an extra shot of performance and should inject some extra pounds come weaning and yearling time.

41

WS King Ten G46 L99
44474408

Horned

3/17/23

WS King Ten 3300 G46
WS Fortress D168 H220 (3)

76 590 100/100

-0.8	3.3	55	92	21
66	0.40	0.45	340	139

A well-rounded G46 son with a lot of maternal longevity built into his pedigree. This bull has 5 females spread throughout his 3-generation pedigree that have stuck around the ranch for an average of 11.5 years. We pride ourselves on long-lasting genetics and this bull should represent that well.

42

WS Impact 0219 L102
44474448

Scurred

3/18/23

Churchill Impact 0219H
WS Queen Ten 5247 H205 (3)

75 591 100/100

0.5	3.9	56	99	28
68	0.48	0.14	362	113

Another nicely-designed Impact son out of a standout 3-year-old King Ten daughter. Balanced trait selection is one of our highest priorities when making mating decisions and L102 fits that goal. The perfect bull for commercial producers trying to make solid steers and fancy heifers.

PRIVATE TREATY *Bulls*

NAME Registration #	Polled Status	DOB	Sire Dam (Dam's Age)	BWT	205	Pigment	CE CW	BWT REA	WWT MARB	YWT \$BMI	MM \$CHB
------------------------	---------------	-----	-------------------------	-----	-----	---------	----------	------------	-------------	--------------	-------------

43

WS King Ten G170 L103
44474451

Polled

3/18/23

WS King Ten 113 G170
WS Rebella 73Z 540 (8)

75 602 100/100

4.5	1.5	46	75	23
66	0.49	0.09	292	107

Here's one of our favorite G170 sons being offered in this year's set. This dark red bull is moderate-framed and moves extremely well. He is heifer-safe and is exactly what we want in a "Good Doin Bull".

44

WS Grand Duke D635 L113
44474492

Horned

3/20/23

Buford Grand Duke A407 D635
WS Queen Ten 5238 016 (13)

87 592 100/100

-2.9	4.7	56	87	27
68	0.36	-0.08	290	89

An attractive Grand Duke son that is best described as functional. This fella was raised by one of the oldest females on the ranch, 016, who's been nothing but a consistent producer for us. This bull has the structure and fleshing ability to cover big country and is perfect for a commercial cowman trying to make solid F1 black baldies.

45

WS Impact 0219 L114
44474499

Polled

3/20/23

Churchill Impact 0219H
WS Miss Battle 120 G68 (4)

98 645 100/40

-9.4	7.2	64	109	29
71	0.50	0.03	381	100

An extremely stout, dark red, Impact son. This bull has the growth and performance to crush the scales come weaning time and should make an outstanding set of feeder calves. One of the best growth EPD spreads in the entire bull offering.

46

WS King Ten G170 L125
44474576

Horned

3/21/23

WS King Ten 113 G170
WS Fortress 1312 F121 (5)

91 663 100/100

-3.0	4.5	52	95	26
74	0.59	0.07	311	115

This bull is the definition of easy fleshing and "Good Doin". L125 is big-bodied just like his dam and hits us as the functional kind. He should make very functional daughters. A do-it-all kind of bull!

47

WS Long Haul J07 L128
44474591

Polled

3/21/23

WS Long Haul 36E J07
WS Grand Duchess D635 H195
(3)

82 655 100/100

1.2	2.5	59	95	36
69	0.40	-0.01	396	98

One of the most heavily pigmented bulls of this year's offering. This stout-made, big-boned J07 son was raised by a hard-working 4-year-old who did a tremendous job on her 1st and 2nd calf. This is the kind of bull we are proud to market and he's the profit-generating kind.

48

WS King Ten G170 L130
44476739

Polled

3/22/23

WS King Ten 113 G170
WS Queen Ten 4102 D39 (7)

86 586 80/40

0.6	2.9	44	75	22
67	0.43	0.10	337	112

Another balanced G170 son who is Wiese bred from top to bottom. This bull was a favorite among us all summer long. Good structured, Good Doin, Good genetics. Perfect for raising replacement quality females.

PRIVATE TREATY *Bulls*



NAME Registration #	Polled Status	DOB	Sire Dam (Dam's Age)	BWT	205	Pigment	CE CW	BWT REA	WWT MARB	YWT \$BMI	MM \$CHB
------------------------	---------------	-----	-------------------------	-----	-----	---------	----------	------------	-------------	--------------	-------------

49

WS Grand Duke H152 L135
44476751

Polled

3/23/23

WS Grand Duke D635 H152
WS Rebella 592 H06 (3)

81 563 100/100

1.2	3.3	49	84	27
60	0.28	-0.13	308	83

A dark red, well-pigmented H152 son that's moderate-framed and easy keeping. Breeding for balance never goes out of style and he's the type that we strive for. Buy with confidence.

50

WS Prominent 21G L138
44476760

Scurred

3/23/23

JDH AH Prominent 21G ET
WS Grand Marketta 644 3223
(10)

74 567 100/100

4.1	1.1	50	72	29
69	0.42	0.42	485	150

A phenotypically superior 21G son who is dark red, goggled-eyed, and will surely catch your eye. Raised by an 11-year-old Grand Duchess female who is an AHA Dam of Distinction. He's a heifer-safe bull and should make just top-notch replacement females.

51

WS King Ten G170 L139
44476761

Homozygous
Horned

3/23/23

WS King Ten 113 G170
WS Miss Foremost 588 F158 (5)

80 623 100/100

3.9	2.2	60	106	23
71	0.63	0.22	364	130

A full sibling to a bull we decided to retain last year, this goggled-eyed G170 son has a lot of shape to him and a very solid EPD profile. His mother, F158, is a high-performing, slick-haired Hyalite daughter who's done an exceptional job for us in her 6-year career.

16

2024 WIESE & SON PRIVATE TREATY OFFERING

PRIVATE TREATY *Bulls*

52

NAME Registration #	Polled Status	DOB	Sire Dam (Dam's Age)	BWT	205	Pigment	CE CW	BWT REA	WWT MARB	YWT \$BMI	MM \$CHB
------------------------	---------------	-----	-------------------------	-----	-----	---------	----------	------------	-------------	--------------	-------------

WS King Ten E213 L141
44476769

Polled

3/24/23

WS King Ten 3187 E213
WS Grand Marketta 644 2239
(11)

90 661 40/0

-5.4	4.8	49	73	26
66	0.38	0.33	362	128

A thick-made bull who is Wiese breeding through and through. L141 should raise long-lasting daughters. His mother, 2239, is a very dependable 12-year-old cow for us who never misses on a mating.

53

WS Baron 8300 L144
44477827

Polled

3/25/23

Churchill Red Baron 8300F ET
WS Queen Ten 3191 E90 (6)

97 684 0/100

-5.0	5.4	66	108	33
77	0.52	0.02	433	124

This bull is the definition of a beef bull. This Red Baron son carries a large set of testicles, is huge-topped, and could raise some dang good F1 steer calves. His mother, E90, is a very hard-working female who consistently has raised some of our stoutest bulls over the years.

54

WS Impact 0219 L148
44477844

Horned

3/25/23

Churchill Impact 0219H
WS Queen Ten 5247 G161 (4)

88 645 100/80

-3.6	5.6	61	103	30
71	0.51	0.07	368	105

A moderate Impact son that checks a lot of boxes. Easy doing with exceptional growth and stems from a hard working King Ten daughter. About as no-nonsense as they come.

55

WS Baron 8300 L154
44484478

Polled

3/26/23

Churchill Red Baron 8300F ET
WS Miss Battle 120 547 (8)

77 608 40/60

-1.9	3.6	56	95	25
69	0.42	0.12	436	119

A dark red, goggled-eyed Red Baron son who is very eye-catching on the move. Just a solid all-round bull who was raised out of an excellent uddered 9-year-old Battle Intense daughter.

56

WS Impact 0219 L156
44484483

Horned

3/26/23

Churchill Impact 0219H
WS Queen Ten 3300 H233 (3)

92 575 80/100

-6.3	5.8	56	103	26
68	0.46	0.15	402	115

Another highly functional Impact son whose mother is the best selling point of this bull. H233 is an attention-grabbing King Ten daughter who has a ton of power and mass. She very well is on pace to become one of our favorite cows in the whole cow herd.

57

WS Prominent 21G L160
44484488

Scurred

3/27/23

JDH AH Prominent 21G ET
WS Queen Ten 113 494 (9)

91 629 100/100

-3.4	4.6	61	95	26
71	0.44	0.24	433	128

The 21G x King Ten cross has just flat-out worked for our program and L160 is no exception. If you're looking for just a solid do-it-all bull, give this guy a hard look. His mother, 494, is a consistent King Ten daughter who's also an AHA Dam of Distinction.

58

WS Prominent 21G L163
44484493

Polled

3/27/23

JDH AH Prominent 21G ET
WS Queen Ten 6202 0206 (13)

82 636 80/80

-1.6	3.2	53	79	31
67	0.36	0.31	481	132

Another solid 21G x King Ten mating who can simply be described as dependable. His mother, 0206, is going on 14 years old and still continues to put out high-quality calves for us. Functional and balanced; our type and kind.

59

WS Prominent J121 L165
44484496

Scurred

3/27/23

WS Prominent 21G J121
WS Queen Ten 113 E60 (6)

85 607 100/60

-2.5	4.6	55	91	22
68	0.42	0.22	388	119

A very easy-doing, big-footed J121 son who should raise some very functional daughters in the future. No nonsense kind of bull.

60

WS King Ten G170 L167
44484503

Polled

3/28/23

WS King Ten 113 G170
WS Miss Battle 120 E149 (6)

100 604 80/100

-7.4	5.7	53	89	23
71	0.51	0.01	335	105

A bull who is superior phenotypically. This solid marked G170 son flat-out glides when he's on the move. His mother, E149, may be one of the most beautiful and feminine-looking females on the entire ranch. This bull could sire some very well-designed steers and daughters down the road.

61

WS Battle F268 L169
44484506

Horned

3/28/23

WS Battle 4139 F268
WS Queen Ten 0209 D48 (7)

87 643 100/100

-5.5	4.4	50	80	26
71	0.46	0.07	378	111

A nicely designed and good-structured bull. Exactly what a commercial cow/calf producer needs to make superior F1 baldies. His sire traces back to one of our oldest genetic lines: Battle Intense.

PRIVATE TREATY *Bulls*



NAME Registration #	Polled Status	DOB	Sire Dam (Dam's Age)	BWT	205	Pigment	CE CW	BWT REA	WWT MARB	YWT \$BMI	MM \$CHB
------------------------	---------------	-----	-------------------------	-----	-----	---------	----------	------------	-------------	--------------	-------------

62

WS Prominent J121 L170
44484508

Polled

3/28/23

WS Prominent 21G J121
WS Miss Battle 4139 F100 (5)

88 673 0/0

-5.6 5.0 64 102 21

74 0.49 0.27 370 124

We love this J121 son and his mother is as low-input and efficient as we have in the herd. Awesome pigment and well-balanced, this bull represents what we are trying to raise day in and day out.

63

WS Grand Duke D635 L178
44484520

Horned

3/29/23

Buford Grand Duke A407 D635
WS Queen Ten 5238 3174 (10)

84 603 100/100

0.4 2.8 50 78 27

64 0.29 -0.06 290 87

Balanced and well-rounded. This is the kind of bull that makes great steers and females. The mating of Buford D635 on 3174, a soon-to-be 11-year-old, has worked many years in a row and L178 represents that perfectly.

64

WS King Ten G46 L180
44485655

Polled

3/30/23

WS King Ten 3300 G46
WS Miss Sensation 028X G26 (4)

80 661 80/100

4.0 1.6 54 83 28

68 0.42 0.30 412 124

One of the sleepers of the pen. This King Ten G46 son is as well-made and correct as we can make one. Functional with a great disposition. His dam, G26, is our very best Sensation 028X daughters.

65

WS Prominent 21G L185
44485666

Polled

3/31/23

JDH AH Prominent 21G ET
WS Queen Ten 6309 353 (10)

81 705 60/20

2.1 2.6 61 78 33

73 0.46 0.33 473 136

The Prominent sire on King Ten cows has been our best mating the past few years and L185 represents why. This bull has a big hip and is rugged-made. He is the do-it-all bull and we are very proud of his coming 11-year-old dam 353.

66

WS Prominent 21G L199
44485931

Scurred

4/9/23

JDH AH Prominent 21G ET
WS Victoria 06A E24 (6)

82 653 100/100

-0.8 2.8 56 82 30

73 0.48 0.26 438 138

We think this may be the best young bull in the offering. He is everything that a Hereford bull needs to be. L199 is thick, good structured, and comes from a cow who never misses for us. We think he checks all the boxes in terms of pedigree, phenotype, and genetic value.

18

2024 WIESE & SON PRIVATE TREATY OFFERING

PRIVATE TREATY *Bulls*

67

WS Prominent 21G L201
44485933

Polled

4/9/23

JDH AH Prominent 21G ET
WS Miss Battle 7191 189 (12)

80 629 100/100

-1.1

2.8

50

78

27

64

0.36

0.35

462

133

The daughters of this bull should make stellar females. A very nice Prominent son that is easy fleshing and functional. His dam, 189, is one of our oldest cows and still is producing nice calves for us. This bull will hold up for a long time for the lucky buyer.

68

WS King Ten G213 L207
44485941

Polled

4/9/23

WS King Ten 3187 G213
WS Grand Marketta 4190 E139
(6)

93 582 100/100

-6.3

5.8

52

85

12

68

0.38

0.05

296

103

A dark red, heavy pigment King Ten son with generations of good Wiese cows in his pedigree. This polled bull with add some meat and bone to his calves. He will grab your attention.

69

WS King Ten E213 L211
44485946

Horned

4/11/23

WS King Ten 3187 E213
WS Queen Ten 285 570 (8)

91 618 100/100

-4.0

3.9

42

66

20

59

0.20

0.49

334

132

Huge marbling bull in a balanced, moderate framed package. He is double-bred King Ten and the epitome of our long-lasting genetic lines. He is a Good Doin' Bull.

70

WS Grand Duke D635 L212
44485948

Horned

4/11/23

Buford Grand Duke A407 D635
WS Queen Ten 3187 E122 (6)

92 641 0/20

-2.4

4.1

57

88

25

70

0.36

-0.11

275

87

We love this bull's growth and muscle. He will add some hip and top into his calves and weaned very respectfully for his younger age.

71

WS Grand Duke D635 L224
44488000

Horned

4/18/23

Buford Grand Duke A407 D635
WS Queen Ten 113 F213 (5)

85 591 100/100

-1.2

5.3

62

102

29

74

0.47

-0.19

276

85

Long and sound best describes this Buford D635 son. His mother is a daughter of our 1108 cow that is a feature of our breeding program.

72

WS King Ten G46 L227
44488003

Horned

4/20/23

WS King Ten 3300 G46
WS Fortress D168 G201 (4)

89 594 60/40

-3.3

4.3

58

93

25

69

0.41

0.40

364

134

A bull that doesn't look his age. For a younger bull, he is rugged and thick. This bull is the cattlemen's kind and his mother has a beautiful udder.

73

WS Prominent 21G L228
44488004

Polled

4/20/23

JDH AH Prominent 21G ET
WS Miss Battle 120 E28 (6)

83 515 100/100

-1.7

3.9

55

91

27

68

0.40

0.45

463

147

This bull is about as ideal in his appearance as we can make one. Stout, dark red, and sound. We love this bull and his dam is one of our favorite soon-to-be 7-year-olds. As he gets older, he may become one of the best in the sale pen.

74

WS Prominent 21G L230
44488008

Polled

4/27/23

JDH AH Prominent 21G ET
WS Grand Marketta 4190 E183
(6)

77 494 100/100

-0.6

2.2

51

79

26

68

0.41

0.39

449

143

He may be the youngest in the offering, but this bull is flat good. We usually cut our later-born calves, but L230 was too good to let go. This bull has the pedigree, phenotype, and potential to make a heck of a breeding bull.

THANK YOU
TO OUR BUYERS



Ranch Address
31554 Delta Ave.
Manning, IA 51455

Office (712) 653-3678

wieseandsons@gmail.com
www.wieseandsons.com

WIESE & SONS

31554 DELTA AVE.
MANNING, IA 51455



WWW.WIESEANDSONS.COM